

TENETIVE ITINERARY – FALL 2017

Friday 9/1	4:00 pm	\$170 Trip fees are due in cashier's office.
Friday 9/15	3:00 – 5:00 pm	Orientation meeting in room 30-208
Friday 9/22	4:00 pm	Homework is due in my office, mailbox or email.

Friday 9/30: Depart San Pedro via Catalina Express to Two Harbors.



DIRECTIONS TO FERRY FROM I 5:
I 5 N (variable mi)
I 405 N (26.4 mi)
I 110 S toward San Pedro (8.2 mi)
 Exit onto **CA-47 N** toward **Vincent Thomas Bridge/Terminal Is/Long Beach** (.6 mi)
 Take the **Harbor Blvd** exit (.3 mi)
 Merge onto **Swinford St** (407 ft)
95 Berth, San Pedro, Ca

NOTE: Ferry parking is \$18 per day.

Figure 1: Directions to Catalina Express Departure Berth

- 11:30am Check-in at San Pedro (late homework due)
- 12:30pm Boat departs San Pedro
- 1:45pm Arrive at Two Harbors, Catalina Island
- 2:00pm Buy supplies (ice, propane, firewood etc.) at general store in Two Harbors
- 2:15pm Walk to Two Harbors Campground (aka Isthmus Cove - 1/4 mi)
- 2:30pm Arrive at Two Harbors Campground and set up camp.
- 3:30pm Geologic walk and talk to Wrigley-USC Marine Science Center at Fisherman's Cove (1.5 mi)
- 5:30pm Arrive at Wrigley-USC Marine Science Center (optional tour)
- 6:00pm Shore boat or walk back to campground
- 6:30pm Arrive at campground / prepare dinner
- 7:00pm Communal dinner

SATURDAY 9/30:



Figure 2: Map of Catalina Island showing locations of stops on Saturday.

- 7:00am Breakfast provided at campground
- 8:00am Vans depart campground
- 8:30am **STOP 1** Greenschist facies metamorphism
- 9:00am **STOP 2** Little Harbor overlook - Greenschist / Blueschist thrust fault, marine terraces
- 10:00am **STOP 3** Miocene plutonic rocks - Catalina Pluton
- 11:00am **STOP 4** Miocene volcanic rocks and mineralization – Dacite / Black Jack Mine
- 12:00pm **STOP 5** Lunch – “Airport in the Sky” (Buy a Buffalo burger or bring your own lunch)
- 1:00pm Airport Nature Center (and walk?)
- 2:00pm **STOP 6** Soapstone (talc) quarry and eclogite
- 3:00pm **STOP 7** Amphibolite facies metamorphism and metasomatism
- 4:00pm **STOP 8** Little Harbor - Blueschist facies metamorphism (bring beach gear)
- 6:00pm Return to campground – Dinner is not provided. You are on your own.

SUNDAY 10/1:

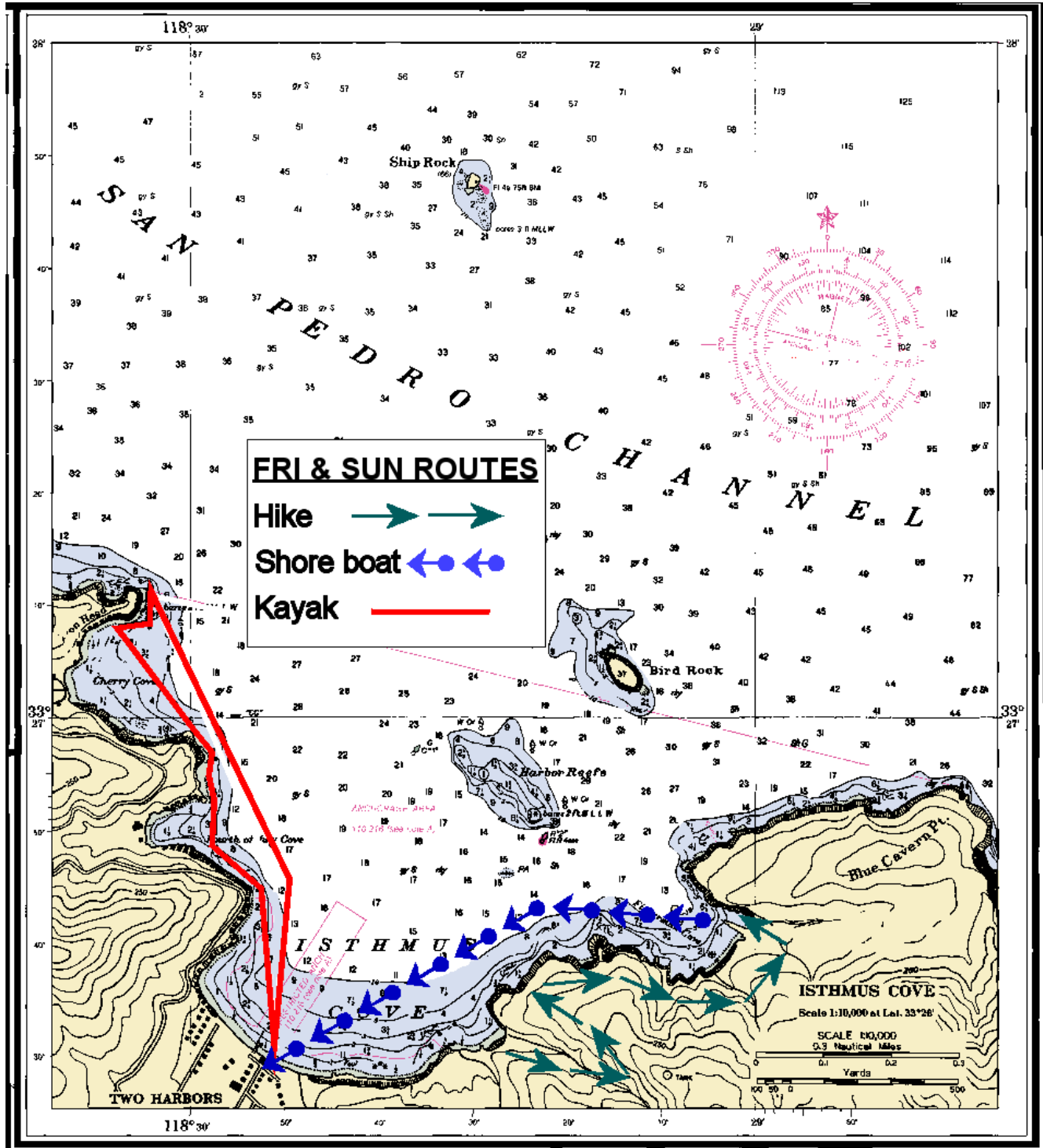


Figure 3: Map of Isthmus Cove area showing trip routes on Friday and Sunday. Shore boat is optional (depends on funding). Bring a daypack and water. You will get a little bit wet on the kayakers, so bring a towel and potentially a bathing suit with you.

7:00am Breakfast provided at campground
 8:00am Walk to Two Harbors (1/4 mi)
 8:30am Coastal geology via kayak – Faulting, folding and coastal processes
 9:30am Return to Two Harbors and walk back to camp (1/4 mi)
 10:00am Review / Q & A period
 10:30am Break camp / load trucks with gear
 11:00am Depart campground for Two Harbors (1/4 mi)
 11:15am Exam (multiple choice, short answer and specimen identification)
 12:45pm Lunch Two Harbors - Lunch is not provided. You are on your own.
 1:15pm Check-in for Catalina Express
 2:15pm Depart for San Pedro
 3:30pm Arrive in San Pedro
 4:00pm Depart San Pedro
 7:00pm Arrive at Grossmont College

Complex folding at Lion's Head



Little Harbor



Sea caves in volcanic breccia



Normal fault in Monterey Shale



Garnets in eclogite



Submarine volcanoclastics near USC Wrigley

